

Solar Panel Mounting Solutions

riwatt



10YEARS
WARRANTY

 info@riwatt.com

Content

Standing Seam Clamp	11-18
Mini Rail & Tilt Leg	19-20
L foot & Hanger bolt	23-24
Rail & Accessories	25-26
Tile Roof Hooks	27-28
Tripod Mount	31-32
Ballasted Mount	33-34
Aluminum Ground Mount	35-36



Manufacturing facilities for both aluminum and steel products



Experienced team since 2010



Global service



Direct racking supply



Design standard: AS 1170.2:2011,
JIS C 8955:2011, UL 1703/2703



10 Years warranty

Disclaimer :

We make every effort to ensure that all the information contained within our catalogue is complete and accurate. Due to continuous product optimization we reserve the right to make any changes or corrections to our products and this catalogue as well as individual product information at any time without prior notice. All previous catalogues and individual product information become invalid upon the release of the later publications.



Global Roofing

We have worked with roofing manufacturers and professional installers across the globe to develop, produce and deliver roof solar mounting solutions for variety kind of roof. Mounting solutions are available for popular and common roofing profiles manufactured from Africa, Europe, Middle East, Asia, America, Australia and New Zealand.

AU/NZ

- Lysaght
- revolution roofing
- Stramit
- Apexsteel
- Mcelroymetal
- Fielders
- Dimond Roofing
- Foofing Industries Ltd
- Metalcraft roofing
- JCP roofing

European

- Domico
- Kingspan
- Kalzip
- Riverclack
- Rukki
- Versasteel
- Phoenix Steels
- Cladco Profiles Ltd
- Accord Steel Cladding Ltd-C
- German-Münker Metallprofile
- Zambelli

North America

- ASC Profiles
- Butler Manufacturing
- ATAS International
- VP Buildings
- Metal Depots
- Metal Sales
- Mcelroy Metal
- Fabral
- Flatiron Steel
- Vicwest
- CBS Sheetmetal
- Lakefront Roofing & Siding Supply
- unioncorrugating
- NCI Building Systems-
- Bridger Steel

Japan

- Kyowa
- Nihon Teppan
- Sanko
- Jfe-Nikkenban

South-east Asia

- Lysaght
- Tata steel
- Good Steel
- Kextra
- GAF

Latin America

- Bluescope
- Armco

Africa

- Safintra
- DURObuild
- Classecon Roofing

Global Service & Proven Records



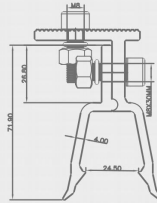


Standing Seam Roof Mount

Standing Seam Clamp



Specification



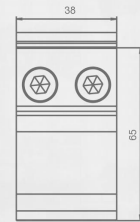
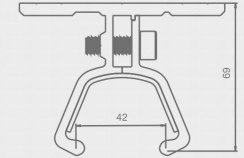
Code: ERK-TRB-C16

To suit:
RIVERCLACK roofing profile

Material			
	quantity	Specification	Material
Clamp	1		Aluminum 6005-T5
top screw	1	M8 x 20mm	SUS 304
side screw	2	M8 x 25mm	SUS 304



Specification



Code: ERK-TRB-C14

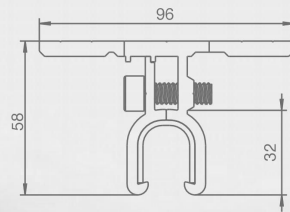
To Suit:
New Zealand Metalcraft Roofing-Metdek 855
New Zealand Dimond-Dimond Roofing-Dimondek 630
Roofing profiles with similar dimension.

Material			
	quantity	Specification	Material
Clamp	1		Aluminum 6005-T5
side hex screw	2	M8 x 25mm	SUS 304

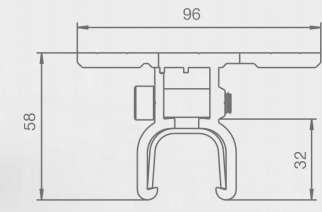
Standing Seam Clamp



Specification



Specification



Code: ERK-TRB-C01

To suit:
Lysaght Klip-lok 406, speed deck ultra and roofing profiles with similar dimension.

Code: ERK-TRB-C01

To suit:
Lysaght Klip-lok 700, Kingclip 700
Roofing profiles with similar dimension.



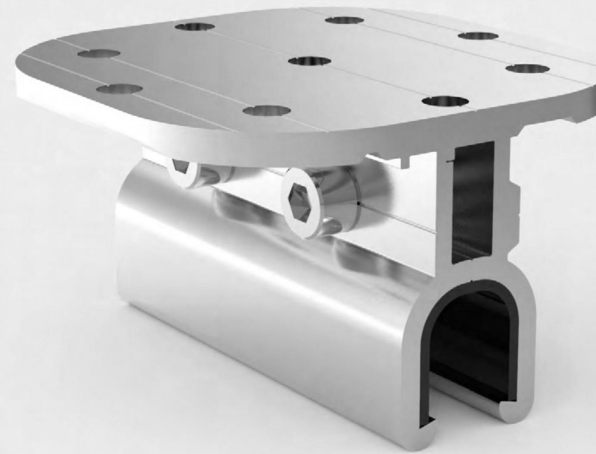
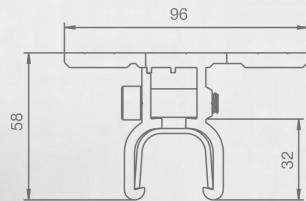
Material			
	quantity	Specification	Material
Clamp	1		Aluminum 6005-T5
side screw	2	M8 x 30mm	SUS 304



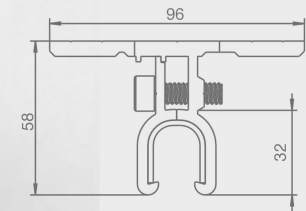
Standing Seam Clamp



Specification



Specification



Code: ERK-TRB-C02

To suit:
Lysaght Klip-lok700, Kingclip 700
Roofing profiles with similar dimension.

Code: ERK-TRB-C02

To suit:
Lysaght Klip-lok 406, speed deck ultra and roofing
profiles with similar dimension.



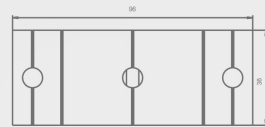
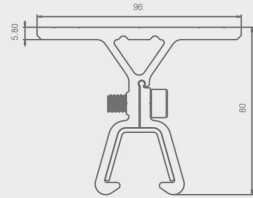
Material			
	quantity	Specification	Material
Clamp	1		Aluminum 6005-T5
side screw	2	M8 x 30mm	SUS 304



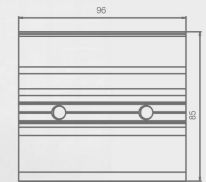
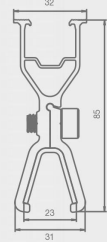
Standing Seam Clamp



Specification



Specification



Code: ERK-TRB-C15

To suit:
New Zealand Metalcraft Roofing Metdek 400/500
Roofing profiles with similar dimension.



Material			
	quantity	Specification	Material
Clamp	1		Aluminum 6005-T5
side screw	2	M8 x 20mm	SUS 304

Code: ERK-TRB-C13

To Suit:
Swissma Sanko Grip Deck, and roofing profiles with
similar dimension.



Material			
	quantity	Specification	Material
Clamp	1		Aluminum 6005-T5
side screw	2	M8 x 20mm	SUS 304

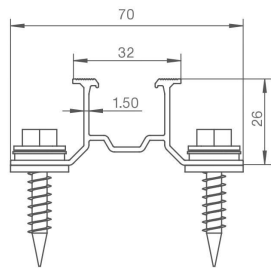
Mini Rail & Tilt Leg



Code: ERK-TRB-D10

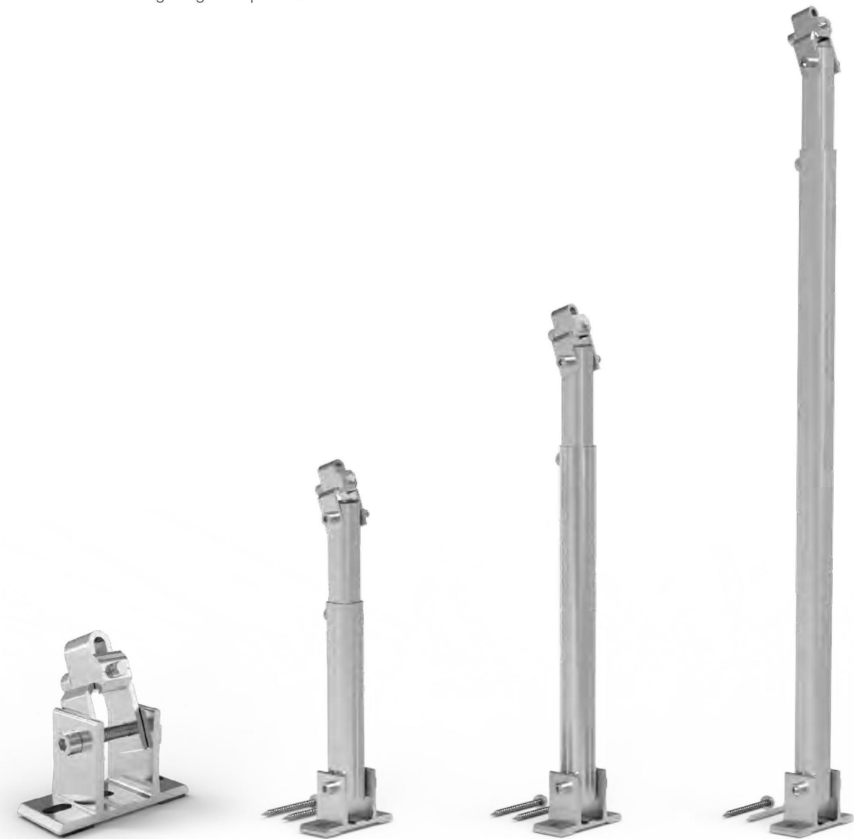
Mini rail for trapezoidal metal sheet roof, corrugated metal roof

Specification

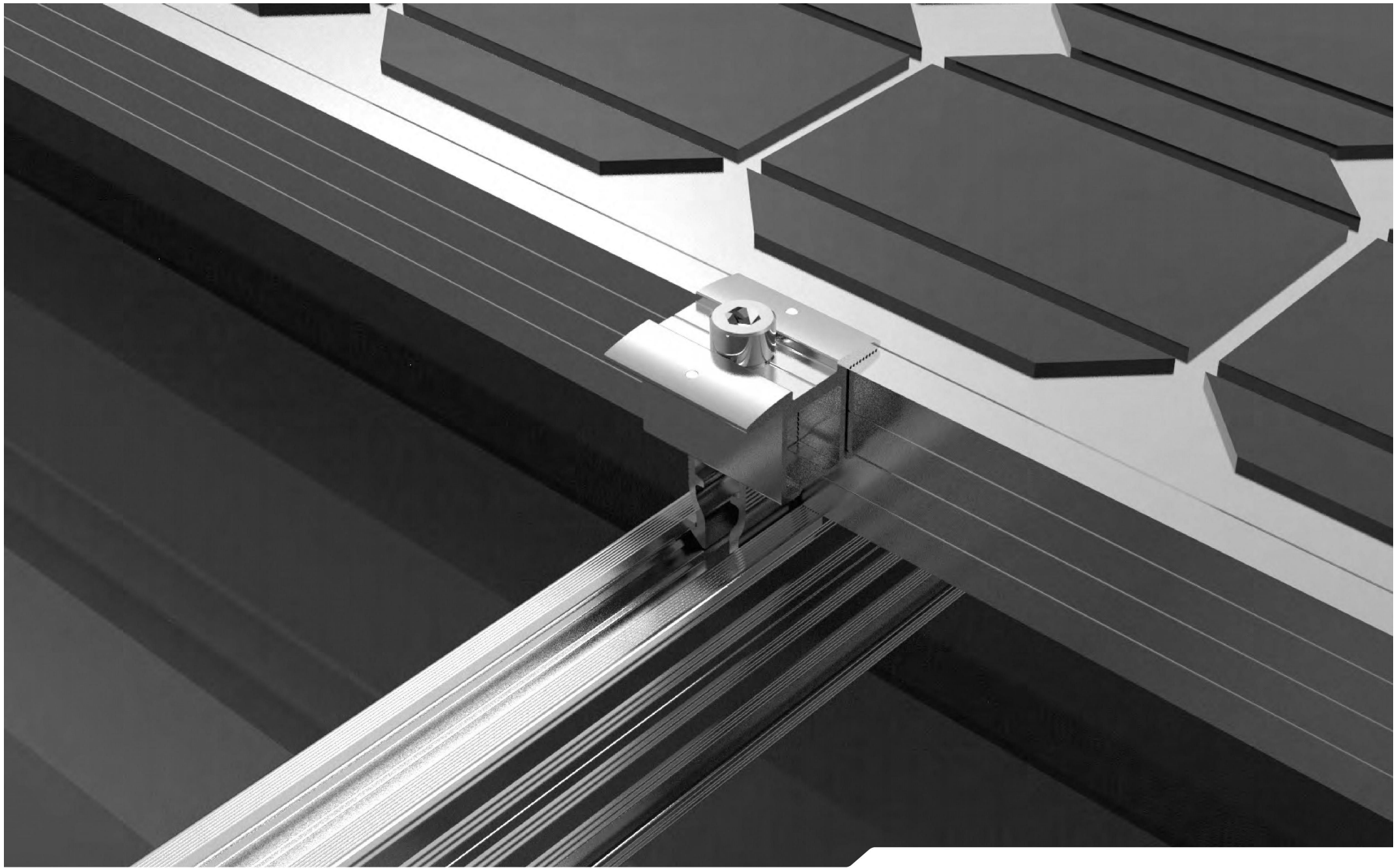


Material			
	quantity	Specification	Material
Mini rail	1	L=385mm	Aluminum 6005-T5
self-drilling screw	4	6.3x 25mm	SUS 410

Install Site: Metal Roof, Concrete Roof.
 Material: AL6005-T5-SUS304.
 Applied Standards: AS/NZ1170.2-UL2703 etc.
 Tilt Angle: 10°~15°, 15°~30°, 30°~60°, or custom tilt angle upon request.
 Building Height: Up to 20m.



ERK-AFL	ERK-ARL-1015	ERK-ARL-1530	ERK-ARL-3060
Front feet	10-15 degree Adjustable leg	15-30 degree adjustable leg	30-60 degree adjustable leg
	Internal tube L=200mm Exterior leg L=200	Internal tube L=360mm Exterior leg L=360	Internal tube L=660mm Exterior leg L=660



Rail & Hooks

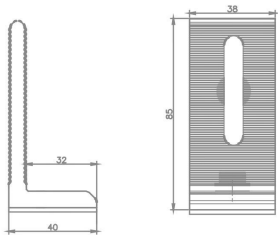
L foot & Hanger bolt

Code: ERK-TRB-D01

L foot comes with 2 applications

- 1: for trapezoidal sheet metal, corrugated sheet metal with a wooden screw or self-drilling screw.
- 2: Conjunction with standing seam clamps for standing seam roof with a flange screw M8 x 20mm

Specification



Code: ERK-TRB-D03

Hanger bolt

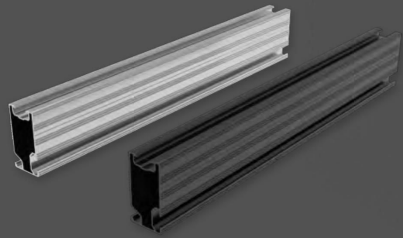
For solar PV mounting on roofs with corrugated fibre cement, or sheet metal on timber substructures. The hanger bolts are M10 and come with 200,250mm,300 length upon request.



Code	Application	Material	Finish	Components
ERK-TRB-D01	Sheet metal roof	Aluminum 6005-T5	Anodized clear	Hex screw M8 x 25mm, rail slot nut, EPDM, wooden/self-drilling screw 6.3 x 80mm
ERK-TRB-D03	Standing seam roof	Aluminum 6005-T5	Anodized clear	Hex screw M8 x 25mm, rail slot nut 10*200 Double Threaded Rafter Screws

Rail & Accessories

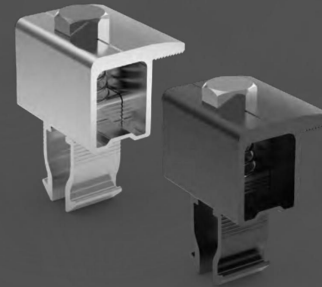
Natural Black



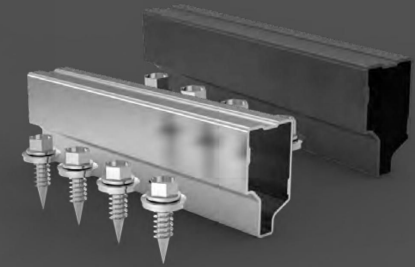
Code: PRE-R55
Premium rail, natural or black finish,
2100mm,3200mm,4200mm or custom length



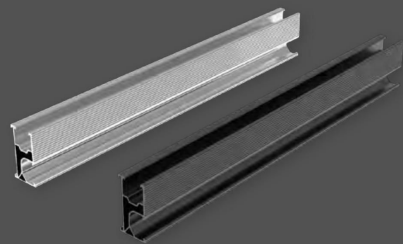
Code: PRE-EIC
Premium rail mid clamp, universal for 30-45mm
module, self-standing with spring, integrated with
grounding pins and clip, fully pre-assembled



Code: PRE-AEC
Premium rail end clamp, universal for
30-45mm module, self-standing with
spring, fully pre-assembled



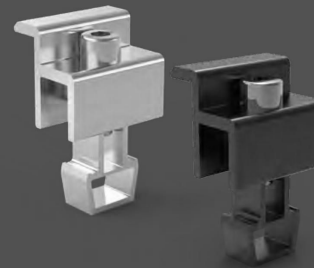
Code: PRE-SFR-01
Internal splice for Premium rail,
fixing by 4 self-drilling screws.



Code: ERK-R52
Standard rail, natural or black finish,
2100mm,3200mm,4200mm or custom length



Code: ERK-EIC
Standard Mid clamp, universal for 30mm-40mm
framed module, fully pre-assembled with
grounding clip, self standing by recessed spring.

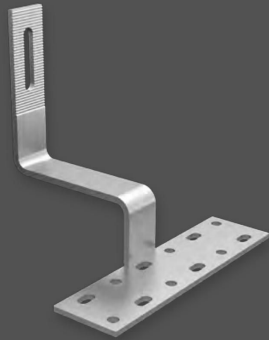


Code: ERK-AEC
Standard rail end clamp, universal for 30mm-40mm framed
module, fully pre-assembled

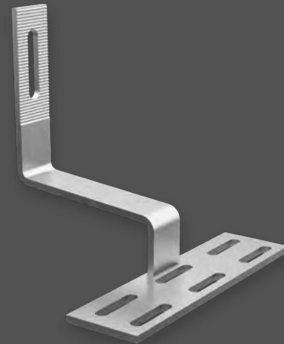


Code: ERK-SFR-01
Standard rail splice to bond rail ERK-R52

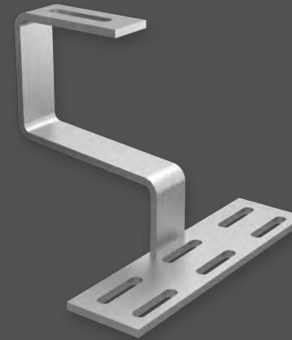
Tile Roof Hooks



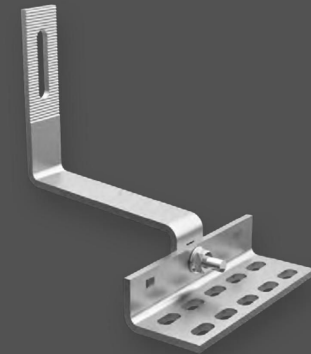
Code: ERK-TRH-T01
 Spanish tile roof hook, for side mount rail
 Type 304 Stainless Steel
 Accessories: 6.3 x 80mm wooden screw, 3 pcs



Code: ERK-TRH-T04
 Spanish tile roof hook, for side mount rail
 Type 304 Stainless Steel
 Accessories: 6.3 x 80mm wooden screw, 3 pcs



Code: ERK-TRH-T17
 Spanish tile roof hook, for bottom mount rail
 Compatible with side mount rail unless an adaptor fastening kit is used
 Type 304 Stainless Steel
 Accessories: 6.3 x 80mm wooden screw, 3 pcs



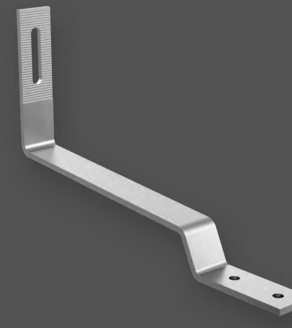
Code: ERK-TRH-T09
 All tile roof hook, for side mount rail
 Type 304 Stainless Steel
 Accessories: 6.3 x 80mm wooden screw, 3 pcs



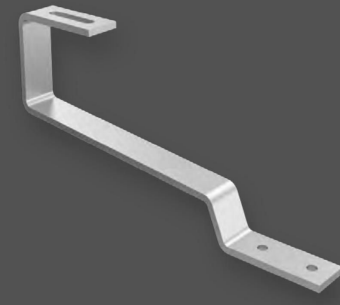
Code: ERK-TRH-T18
 All tile roof hook, for bottom mount rail
 Compatible with side mount rail unless an adaptor fastening kit is used
 Type 304 Stainless Steel
 Accessories: 6.3 x 80mm wooden screw, 3 pcs



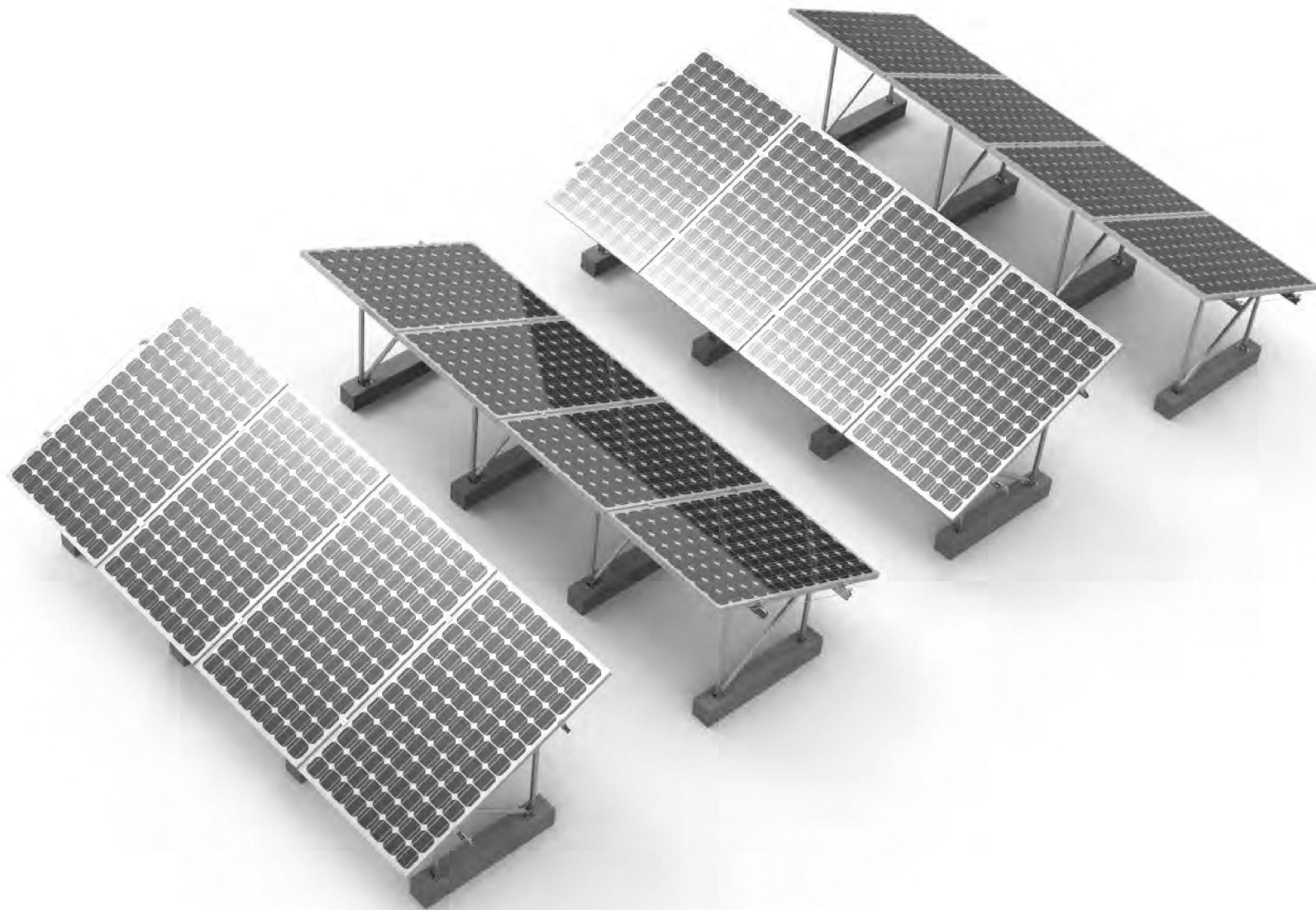
Code: ERK-TRH-T13
 Spanish tile roof hook, for side mount rail
 Compatible with side mount rail unless an adaptor fastening kit is used
 Type 304 Stainless Steel
 Accessories: 6.3 x 80mm wooden screw, 3 pcs



Code: ERK-TRH-F01
 Flat tile roof hook, for side mount rail
 Type 304 Stainless Steel
 Accessories: 6.3 x 80mm wooden screw, 2 pcs



Code: ERK-TRH-F03
 Flat tile roof hook, for bottom mount rail
 Compatible with side mount rail unless an adaptor fastening kit is used
 Type 304 Stainless Steel
 Accessories: 6.3 x 80mm wooden screw, 2 pcs



Flat Roof & Ground Mount

Tripod Mount



Standard Tripod System

Standard tripod rack, for single row module installation. Ideal for small installation on roof or ground.

Technical features:	
Product name	Standard tripod rack
Application	Flat roof or open terrain
Inclination	5°~60°
Tripod material	Aluminum alloy 6005 T5
finish	Anodized clear, avg 12um
PV module	Framed, unframed
Module size	60 or 72cell
Module orientation	Portrait



DP Tripod System

DP tripod rack, ideal for small installation on roof or ground with double rows of module in portrait.

Technical features:	
Product name	DP tripod rack
Application	Flat roof or open terrain
Inclination	5°~60°
Tripod material	Aluminum alloy 6005 T5
finish	Anodized clear, avg 12um
PV module	Framed, unframed
Module size	60 cell
Module orientation	Portrait



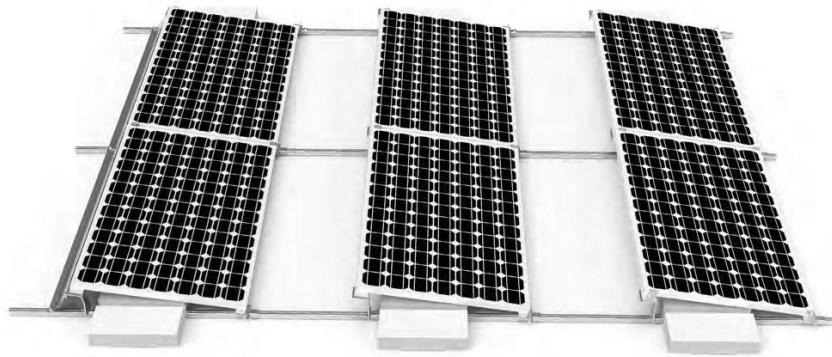
NH Tripod System

NH tripod rack, ideal for small installation on roof or ground with a specific designed height. Module height from ground: 500mm-1000mm or custom.

Technical features:	
Product name	NH tripod rack
Application	Flat roof or open terrain
Inclination	5°~60°
Tripod material	Aluminum alloy 6005 T5
finish	Anodized clear, avg 12um
PV module	Framed, unframed
Module size	60 or 72cell
Module orientation	Portrait

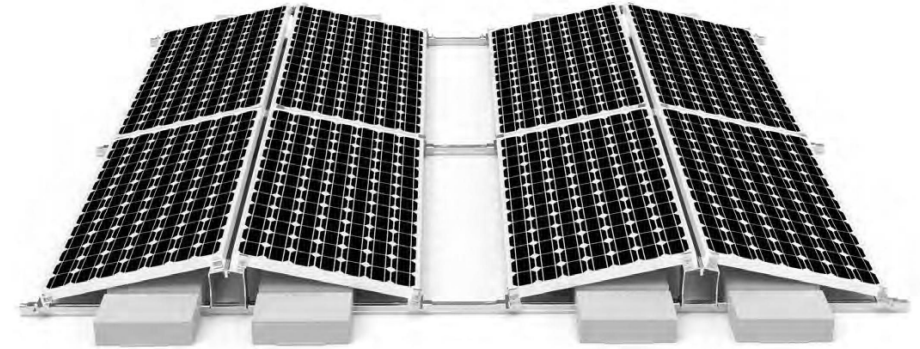


Ballasted Mount



Ballast mount, ideal for solar solar installation on flat roof with south or North direction.

Technical features:	
Product name	NS Ballst mount
Application	flat roof
Inclination	5°~15°
Ballast material	AL5052-H32
Finish	anodized clear, avg 12um
PV module	framed, unframed
Module size	60 or 72 cell
Module direction	South or North
Module orientation	landscape

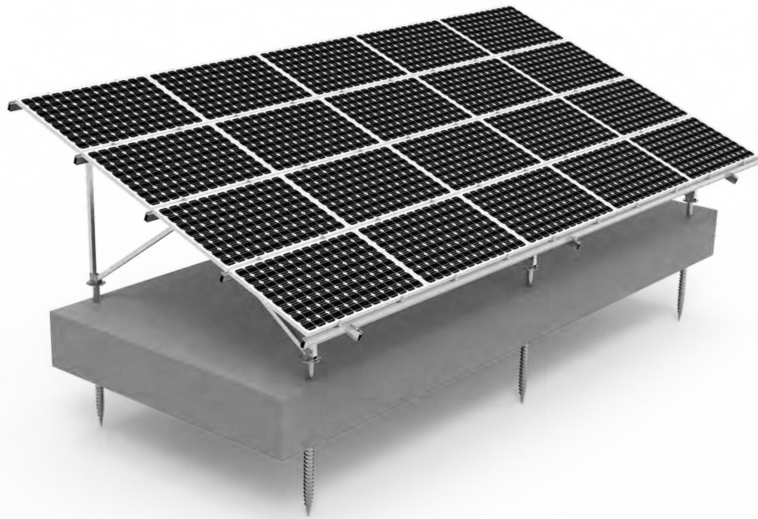


Ballast mount, ideal for solar solar installation on flat roof with a East-West direction.

Technical features:	
Product name	EW Ballst mount
Application	flat roof
Inclination	5°~15°
Ballast material	AL5052-H32
Finish	anodized clear, avg 12um
PV module	framed, unframed
Module size	60 or 72 cell
Module direction	East-West
Module orientation	landscape



Aluminum Ground Mount



Standard Ground Mounting System

Aluminum ground mount, optimized for lightweight, quick and efficient installation with flexible engineering upon site conditions.

Optional on foundation by ground screw or concrete.
Highly-pre-fabrication before shipment

Technical features:	
Product name	Standard Ground Mounting System
Application	ground or open terrain
Inclination	5°~60°
Material	HDG steel pile, aluminum 6005 T5 racking,
Finish	anodized clear, avg 12um
PV module	framed, unframed
Module size	60 or 72 cell
Module orientation	landscape or portrait



U Pile Ground Mounting System

Ground mount with pile-driven foundations, optimized for project-specific planning, excellent material efficiency, quick and simple mounting

HDG steel pile with aluminum strut, beam, rails and clamps.
Highly-pre-fabrication before shipment

Technical features:	
Product name	U Pile Ground Mounting System
Application	ground or open terrain
Inclination	5°~60°
Material	Aluminum 6005 T5 racking, HDG steel ground screw
Finish	anodized clear, avg 12um
PV module	framed, unframed
Module size	60 or 72 cell
Module orientation	landscape or portrait

TOGETHER
WE THRIVE
RIWATT.COM